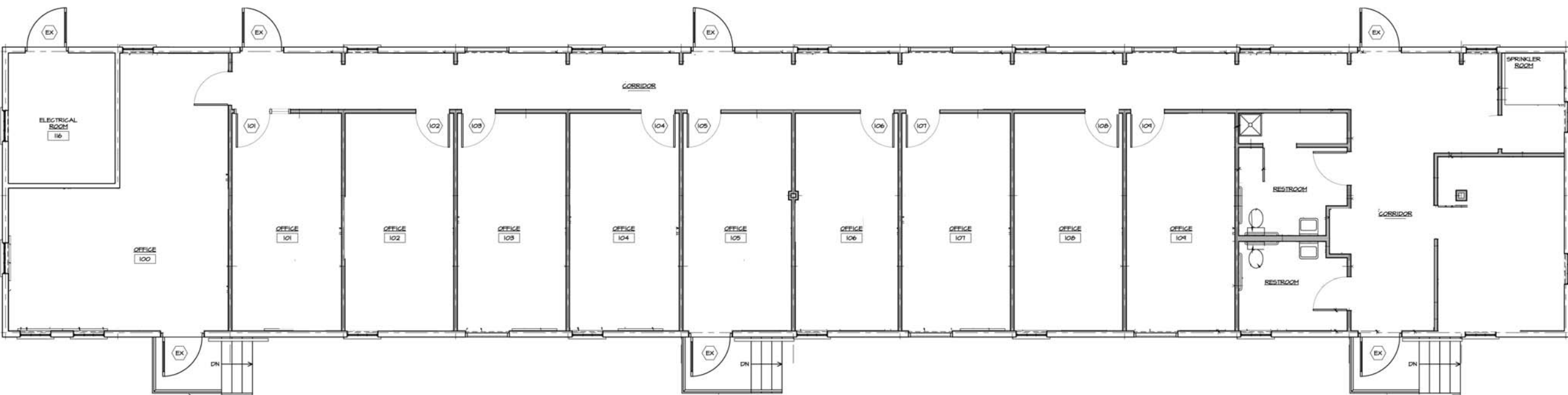



WALKWAY



GREENWOOD AVENUE

ISSUED FOR A1.1 CONSTRUCTION 2 OF 5	<small>© 2009 VISION 3 ARCHITECTS THESE DOCUMENTS HAVE BEEN PREPARED SPECIFICALLY FOR THE RUMFORD CENTER BUILDING #9, 20 NEWMAN AVE., RUMFORD, RI. THEY ARE NOT SUITABLE FOR USE ON OTHER PROJECTS OR IN OTHER LOCATIONS WITHOUT THE APPROVAL AND PARTICIPATION OF VISION 3 ARCHITECTS. REPRODUCTION IS PROHIBITED.</small>	DRAWN BY: AH CHECKED BY: CW, DP DATE: 07-08-09 PROJECT NO: 08081H	RUMFORD CENTER BUILDING #9 20 NEWMAN AVENUE RUMFORD, R.I.	TITLE FLOOR PLAN 4 WALL TYPES	VISION 3 ARCHITECTS 225 CHAPMAN STREET • PROVIDENCE, RHODE ISLAND 02905 • 401-461-7771	PROJECT NORTH 	FLOOR PLAN SCALE: 1/4"=1'-0"
		REVISIONS 					